

Project Partners



Landkreis Kassel



Project Coordinator

Ausra Razgune



Vilnius University
Universiteto st. 3,
LT-01513 Vilnius
Lithuania
Phone: (+370 5) 239 8798
ausra.razgune@cr.vu.lt

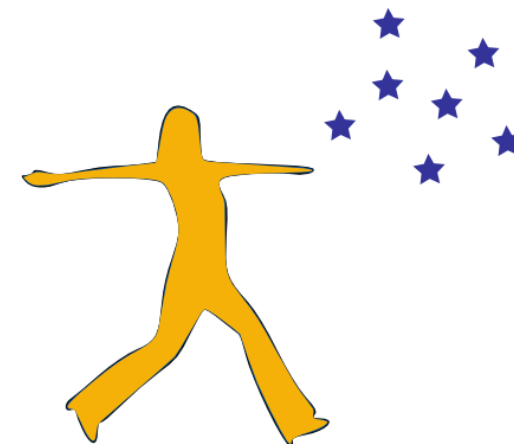
www.promote-eu.org



Co-funded by the
Erasmus+ Programme
of the European Union

The European Commission support for the production of this publication does not constitute an endorsement of the contents which reflects the views only of the authors, and the Commission cannot be held responsible for any use which may be made of the information contained therein.

PROMOTE



**Promoting and Validating
Key Competences in Mobility and
Traineeships in Europe**

www.promote-eu.org

Rationale

The Erasmus programme started more than 25 years ago. In order to recognise the learning that takes place in the framework of these mobilities, institutions have paid a lot of attention to interchangeable subject related credit systems. Still, very few organisations have paid attention to the hidden added value of European mobility in terms of the personal and social key competences that students develop abroad in a different educational, social and cultural context.

Objectives

PROMOTE aims at setting up holistic competence oriented open learning environments to promote and validate key competences at the interface of academic education and learning in practice business contexts.

The project will focus on the following key competences that are most relevant both in students' mobility and traineeships as well as in continuous professional development:

- ✦ social and civic competences
- ✦ sense of initiative and entrepreneurship and
- ✦ learning to learn

Reference frameworks are inexistent when it comes to the validation of these key competences, even though they are essential for our societies.

PROMOTE aims at closing this gap by using one of the most effective ways of learning – learning in mobility – and validating the learning outcomes in terms of those key competences.

Activities and Outputs

The main activities of the PROMOTE project between December 2015 and November 2016:



- ✦ Researching existing approaches for acquiring and validating key competences both in higher education and in enterprises;
- ✦ Developing an overarching competence oriented learning and validation approach;
- ✦ Enriching existing validation and certification systems and linking with existing ECTS-based validation and certification;
- ✦ Customising the web-based LEVEL5 system for competences acquired in European mobility, traineeships continuous and professional development programmes.
- ✦ Piloting and evaluating the competence oriented learning and validation system in internships or traineeships;
- ✦ Transferring the project results both into university contexts (to enrich formal curricula) and into the business sector (continuing professional development schemes).

Target Groups

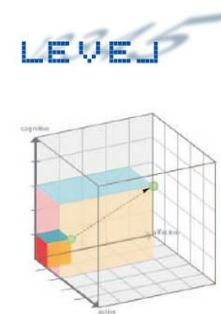
PROMOTE addresses

- ✦ Students and recent graduates recruited as mentees/interns;
- ✦ Entrepreneurs recruited as mentors and their wider networks;
- ✦ Staff from partner universities trained in mentoring and/or entrepreneurship;
- ✦ Members of the high education community.

Validation

PROMOTE makes use of the LEVEL5 system which is specifically designed to assess personal, social and organisational competence developments in rather non-formal and informal learning settings.

It is based on a 3-dimensional approach to validate cognitive, activity related and affective learning outcomes – the LEVEL5 cube.



LEVEL5 is a holistic learning process that benefits the learner, learning providers and host entrepreneurs.

Find more information on:
www.promote-eu.org